



FundWare built intelligence into its **General Ledger** (GL) module – to provide organizations daily assistance in efficiently maximizing their accounting data and the knowledge it contains. Because it was built specifically for mission-based organizations, the FundWare GL has all the features you're not likely to find in packages designed for for-profit entities. Features include multi-year reporting, online budget control, advanced security and more.

The Table-Driven Chart of Accounts features a (3D) account structure containing:

- Categories and Groupings ("Attributes") – Financial groupings to facilitate reporting.
- User-Defined Fields ("Data Items") – Additional fields for tracking financial or non-financial information, such as grant ending date or number of clients served, to be integrated with financial information for better reporting.
- Transactional Data – The information keyed on every line of every transaction.

## FEATURE HIGHLIGHTS:

### Table-Driven Chart of Accounts

**Account Builder** – The Account Builder helps create valid account combinations to assist in building your chart of accounts and to eliminate data entry errors. Easily add new groups of accounts as new functions, programs or grants are introduced.

**Access** – Drill down from the account number to transaction history for details, or print easy to understand information grids as instant reports.

### Flexibility and Customization

**Home page** – The GL home page can be set to monitor key data of your choosing, such as cash account balances. You may also create a task list to remind you of deadlines.

**Grid View** – Users can configure their own data entry or inquiry screens by arranging the columns of information, sorting columns in priority or hiding those that are unnecessary to their job or rarely utilized.

**Data Entry** – Each user may select their preferred mode of data entry, either a separate column for debits and credits, or single column entry. Plus, users can perform data entry using the mouse, 10-key style or a combination of both.

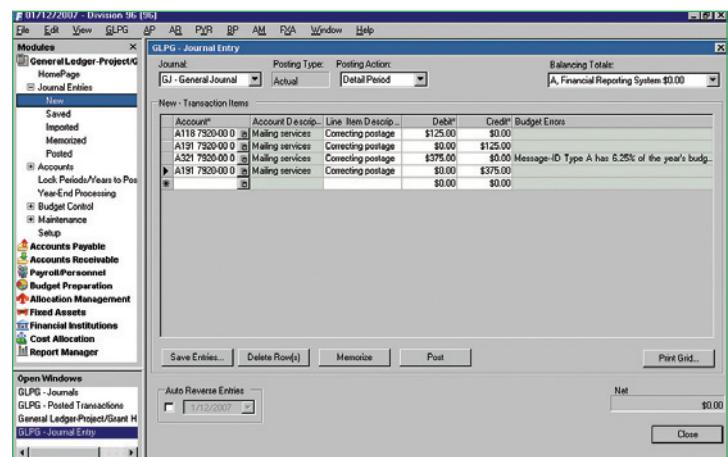
### Intelligent Functionality

**Reporting** – The Report Manager includes more than 60 built-in reports, automatically configured to use your unique chart of accounts. Templates cover a variety of needs, including FASB and GASB reporting requirements.

**Flexible Year-End** – Easily close revenue and expenses to multiple equity accounts, reopen previous years for audit adjustments and perform final close.

**Security** – Individual and workgroup security features ensure that all access levels are authorized. Maintain unlimited open periods and fiscal years, as security features allow you to specify valid posting periods.

**Online Budget Control** – Manage your budget online with real-time information. Determine what fixed amount or percentage may be spent. When amounts are close to being reached, warnings are issued. If amounts are exceeded, the system locks to prevent overspending until further authorization is received.



Strong Budgeting Functionality -Enter your Budgets into the Budget form, or import them directly from Excel.

**Dashboard**

- Customizable for each user
- Activity reminders
- Key data monitors
- Frequently used reports
- System lists

**Journal Entries**

- User defined journal entry grid view
- Memorized data entry
- Journal entry import
- Complete audit trail
- Saved data entry
- Real time budget monitoring with warning messages
- Post to unlimited number of fiscal years
- Auto reverse entries
- Batch entries

**Chart of Accounts**

- User defined display settings
- Unlimited user defined journals
- Automated account duplication and maintenance
- Budget accounts
- Unlimited number of user defined fields
- Drill down to underlying details
- User defined account segments and linked account
- Groupings (attributes)

**Period/ Year End Processing**

- Reopen / close periods and/or fiscal year
- Purge / save fiscal year
- Roll beginning balances
- Post revenue and expenses
- Up to four adjustment periods per year
- End of year reclass period that does not roll forward

**Complete Audit Trail**

- View what data was entered
- View who entered the data
- View when data was entered
- Drill down within views

**Reports**

- Summary and detail reports
- 26 pre-defined report templates
- Transaction reports
- Unlimited user defined reports
- Financial statements
- Revenue and expense reports
- Ability to define multi-level reports

Call toll-free 866.KINTERA (546.8372) or [info@kintera.com](mailto:info@kintera.com)  
9605 Scranton Road, Suite 200 San Diego, CA 92121 [www.kintera.com](http://www.kintera.com)

**Kintera®**